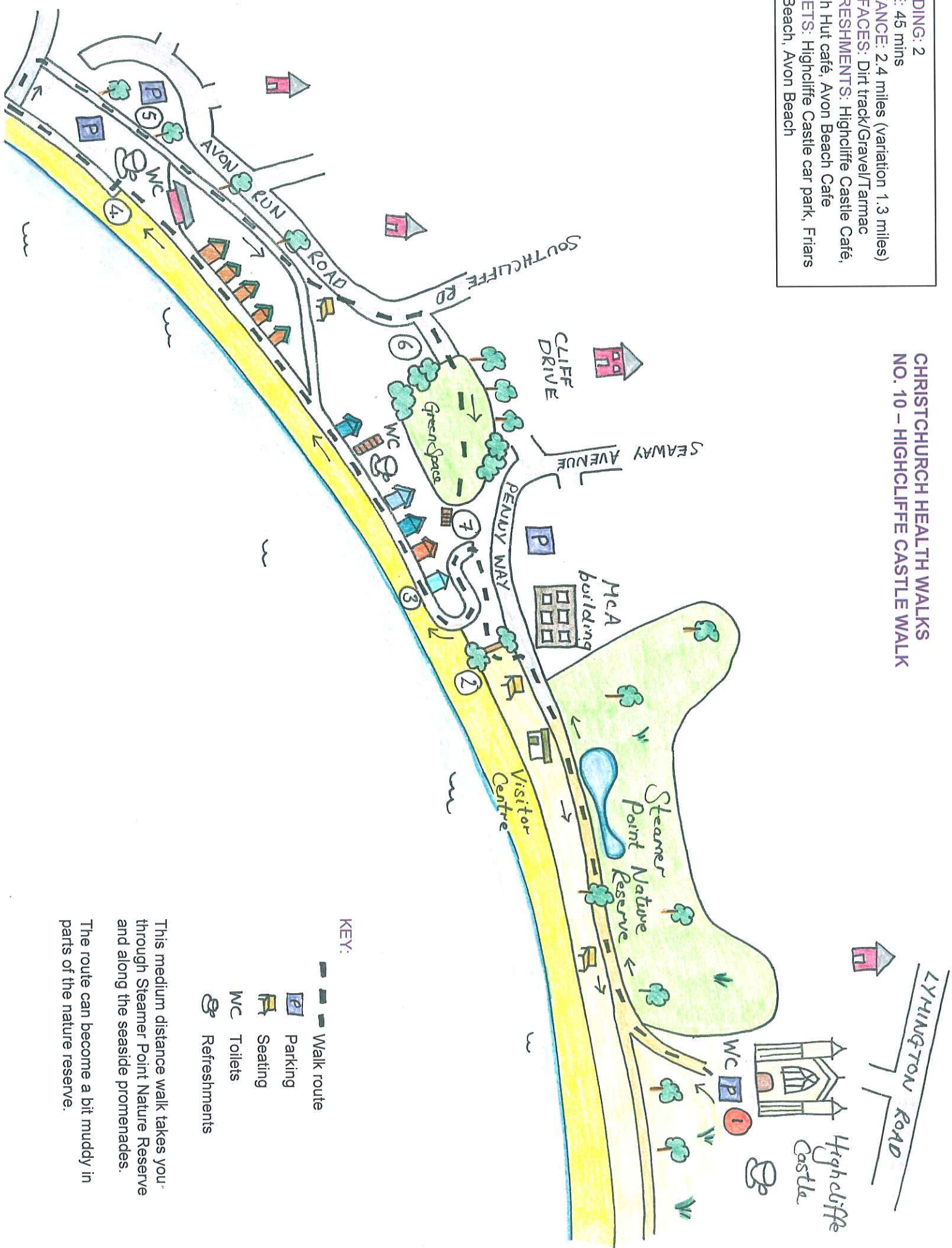


**CHRISTCHURCH HEALTH WALKS
NO. 10 – HIGHCLIFFE CASTLE WALK**

GRADING: 2
TIME: 45 mins
DISTANCE: 2.4 miles (variation 1.3 miles)
SURFACES: Dirt track/Gravel/Tarmac
REFRESHMENTS: Highcliffe Castle Café,
 Beach Hut café, Avon Beach Cafe
TOILETS: Highcliffe Castle car park, Friars
 Cliff Beach, Avon Beach



KEY:

- Walk route
- Parking
- Seating
- WC Toilets
- Refreshments

This medium distance walk takes you through Steamer Point Nature Reserve and along the seaside promenades. The route can become a bit muddy in parts of the nature reserve.

CHRISTCHURCH HEALTH WALKS NO. 10 – HIGHCLIFFE CASTLE

Starting from Highcliffe Castle car park **(1)** head towards the sea and turn right to enter Steamer Point Nature Reserve. Steamer Point has both wooded and aquatic areas and is home to a variety of flora and fauna. You can enjoy spectacular views across Christchurch Bay through the breaks in the trees. Follow the path through the reserve, past the visitor centre and continue past the Marine and Coastguard Agency building on the right. Exit through the gate **(2)** and continue for approximately 50 metres before turning left towards the beach huts. Make your way down to the beach promenade **(3)**.*

Continue along the promenade until you reach the far end of Avon Beach Café. Then walk through the gap in the wall on the left **(4)** and follow the path at the edge of the beach. When you reach the end of the car park turn right past the large green barrier. Turn right again when level with the far side of the car park and up the slope to the upper path **(5)**.

Leave the coast as Southcliffe Road veers inland and then turn right down Cliff Drive **(6)** and through the gate at the end of the road. Cross the green to the opposite side and down the steps in the right hand corner **(7)** (to avoid the steps leave the grass at the left hand side and follow the tarmac slope towards the sea.) Now retrace your steps back through Steamer Point Nature Reserve and onto Highcliffe Castle.

***Shorter route**

Follow the slope down to the beach and turn right to walk along the promenade in front of the beach huts. Head towards the Beach Hut Café before turning back to retrace your steps to Highcliffe Castle.